

VISIT THE OFFICE OR CALL US TO GET MORE INFORMATION ABOUT STORMWATER MANAGEMENT.

394 Schroon River Rd.
Warrensburg, NY 12885

Phone: (518)623-3119

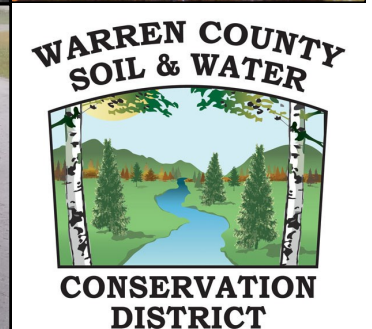
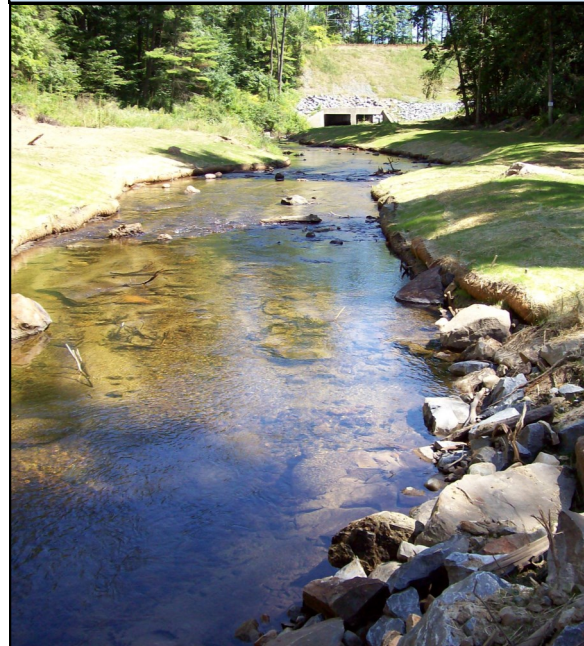
Fax: (518)623-3519

Or visit us at our website—www.warrenswcd.org



Supporting information in this pamphlet was compiled from the US EPA and the NYSDEC

DEALING WITH STORMWATER



WHAT IS STORMWATER RUNOFF?

Stormwater runoff is rain or snowmelt that flows over land or impervious surfaces (paved streets, parking lots, and building rooftops) and does not infiltrate into the ground. This runoff is a concern for water quality and quantity!



WHY PREVENT STORMWATER RUNOFF?

As stormwater runoff flows over the land it can accumulate debris, chemicals, sediment and other non-point source pollutants such as garbage and debris (bags, bottles, etc.). These pollutants can be discharged into local lakes and streams, negatively impacting water quality, and reducing habitat for fish and wildlife populations.

It is easier and less expensive to manage stormwater at the source, rather than treat the downstream impacts.

SIMPLE WAYS TO PREVENT STORMWATER RUNOFF IMPACTS

- Utilize various Best Management Practices (BMP's) such as infiltration, diversion and filtration. Don't just use one type of practice if possible.
- Keep clean water clean by diverting water around a worksite or unstable area.
- Utilize both temporary and permanent stormwater BMP's in your project. Make sure that they are functioning properly.
- Consider incorporating *Green Infrastructure*, such as rain gardens into your landscape. The garden will collect water instead of allowing it to flow off your property, the plants will take up nutrients and they also provide valuable wildlife habitat.
- Keep trash in containers and off lawns and out of the streets. Be sure to pick up and dispose of pet waste appropriately.
- Utilize the NYSDEC Stormwater Design Manual which is available for download at <http://www.dec.ny.gov/chemical/29072.html>
- Educate yourself! Contact your local Soil and Water Conservation District and attend educational programs offered to the public.

