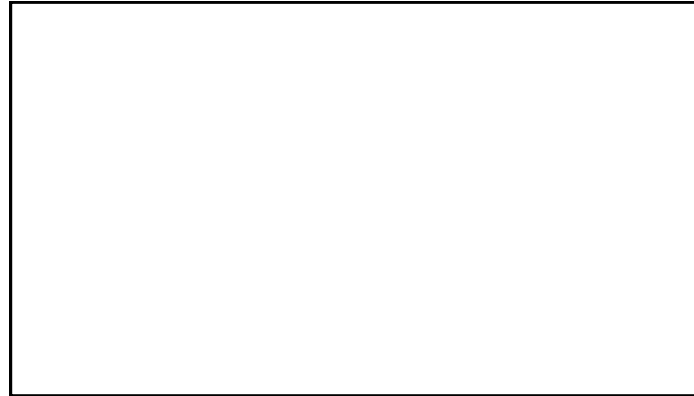




Warren County Soil and Water
Conservation District
394 Schroon River Rd.
Warrensburg, NY, 12885



**Warren County Soil & Water Conservation District
2020 Tree & Shrub Seedling Program**

*****Order Deadline: March 13, 2020*****

Pickup Date: April 24th from 8:30 AM to 6:00 PM

It's that time of year again to start thinking spring!

Get your low cost bare root trees, shrubs, wildflower seeds & more for 2020!

For information or questions-

Phone: 518.623.3119

Website: www.warrenswcd.org



2020 TREE & SHRUB SEEDLING INFORMATION

SPECIES	MATURE HEIGHT	GROWTH RATE	LIGHT PREF.	SOIL TYPES	PREF. SOIL MOISTURE	COMMON USES/CHARACTERISTICS
CONIFERS						
White Cedar (Arborvitae)	20-30'	→/↓	☀	S,L,C,A	m	good choice for windbreaks or hedges
Blue Spruce	50-60'	→/↓	☀	S,L,C,A	wd	nice blue-green color, valued landscape tree
Norway Spruce	40-60'	→/↑	☀	S,L,C,A	m, wd, pd	ideal windbreak, dark green needles
White Spruce	50-60'	→	☀	S,L,C,A	m	straight, tall, good year-round color
Douglas Fir * (note below)	45-75'	↓	☀/●	S,L,C,A	m	popular Christmas tree, good windbreak
Canaan Fir	50-60'	→/↓	☀/●	S,L,C,A	m	ornamental/ Christmas tree
Fraser Fir	30-60'	→	☀/●	S,L,C,A	m	one of the most popular Christmas trees
DECIDUOUS HARDWOODS						
Native White Birch	40-50'	→/↑	☀/●	S,L,C,A	m, wd	distinct paper-like bark, excellent fall color
Sugar Maple	50-75'	↓	☀/●	S,L,C	wd	great fall color, syrup production
Shagbark Hickory	80'	↓	☀	S,L	wd	beautiful when its winter buds open in late spring
FRUIT TREES/SHRUBS						
Arrowwood	12-15'	↑	☀	S,L,C,A	m, wd	showy in spring when the flowers bloom
American Hazelnut	8-16'	→/↑	☀	S,L	wd	blooms in early to mid spring
Elderberry	5-12'	↑	☀/●	S,L,C,A	m	deep purple fruit, umbel shape
Silky Dogwood	6-8'	↑	☀/●	S,L,C,A	all	white flowering shrub
Ninebark	5-10'	↑	☀/●	S,L,C	wd, md, pd	splitting bark forms layers of strips on the stem
Nannyberry	20'	↑	☀	S,L,C,A	all	glossy green foliage that turns red-purple in fall.
Witch Hazel	20'	→/↓	☀/●	S,L,C,A	all	fragrant flowers, bright yellow ribbons, fall bloom
Highbush Blueberry	15-22"	→	☀	S,L,C,A	wd, md	landscape bush, low maintenance, juicy berries
Liberty Apple	25-30'	→/↑	☀	S,L,C,A	wd, md	firm flesh, crisp, Sweet/tart flavor, available Sept-Dec
Empire Apple	25-30'	→/↑	☀	S,L,C,A	wd, md	juicy, crisp and mildly sweet, high in Vitamin C
Blake's Pride Pear	12-20'	↑	☀	S,L,C,A	wd, md	white flowers, 6-8 hours of sunlight a day
Moonglow Pear	12-20'	↑	☀	S,L,C,A	wd, md	braches will spread to 12 - 20'
CONSERVATION PACKS						
Nut Tree Pack	60-70'	↑	☀/●	S,L,C	wd	great food source for wildlife, firewood
Native Flowering Pack	10-25'	↑	☀/●	S,L,C	wd	produces flowers for pollinators and fruits for wildlife
Bird & Butterfly Pack	10-70'	↑	☀/●	S,L,C	wd	food source for caterpillars and adult butterflies
HABITAT IMPROVEMENT SEED MIXES lbs./acre						
Small Burnett	1.5'	→/↑	25	S,L,C	variety	wildlife food and cover, good for erosion control
Deer Plot Mix	6-8"	→/↑	35	L	variety	20 species of perennials for hooved browsers
Short Mix	2-4'	→/↑	25	S,L,C	variety	variety of annuals & reseeding annuals for upland birds
Tall Mix	up to 10'	→/↑	25	S,L,C	variety	variety of reseeding annuals for upland birds
** A soil test is recommended, lime and fertilize as needed, broadcast seed and cover by raking and mulch if possible.						
SUPPLEMENTAL MATERIALS						
Agrosoke™	add to soil mixture, reduces watering frequency				crystals, retains moisture	
Tree mats	3' square mat with micro pores to let water through				suppresses competition from weeds	
Tree shelters w/ stakes	2' Tube with stake and zip tie				prevents chewing damage to stems	
Agriform™ (fert. tablets)	(20-10-5)	slow release			tree fertilizer tablets	
Northeast Wildflower Seed Mix	4 oz.	covers 1,200 sq. ft.			19 perennial and self sowing annuals	
Bluebird nest box	Economy	with predator guard			pairs should be 20-30 feet apart	
Bluebird nest box	Deluxe	Peterson's Style			paired sets should be 150 feet apart	
** bluebirds will rear a second brood if the nest is removed after the first fledglings have left						
Bat box	small nursery box will hold up to ~ 30 little brown bats					
Wood Duck box	mount 2' above high water mark over water or ~20 ft. in hardwoods					
<u>Soil Types</u>	<u>Soil Moisture</u>		<u>Growth Rate</u>		<u>Light Preference</u>	
S - Sandy	m - moist		↑ Fast		☀ Full Sun	
L - Loamy	wd - well drained		→ Moderate		● Shade	
C - Clay	md - moderately drained		↓ Slow		☀/● Both	
A - Acidic	pd - poorly drained				● Partial	
*NOTE: Douglas Fir is offered in place of Balsam Fir for the 2020 Program						
***** Remember to check box on order form to stay on mailing list *****						

Rooting into Education

Get to know your planting site!

Are you planning to plant a tree, garden, wildflower patch, raingarden or a food plot? Familiarize yourself with the area beforehand and take note of light conditions, soil characteristics, topography and land features.

Know your soil: Do you have sand or clay? Is the ground wet or dry? A soil test will help to understand the quality of your soil, contact your Cornell Cooperative Extension for information. For general information about your soils, visit the [Web Soil Survey](#). Just enter your address, highlight the planting location and it will produce a general reference map of your soils.

Know your plants: What soil do they prefer? What wildlife will it attract? Native specimens will outperform other specimens. They will be healthier and last longer.

Know your frost cycle: To make sure your newly planted garden will survive the seasons, you will need to know your area's average frost dates. In Warren County frost has been seen in mid April and late October, be aware of weather conditions.

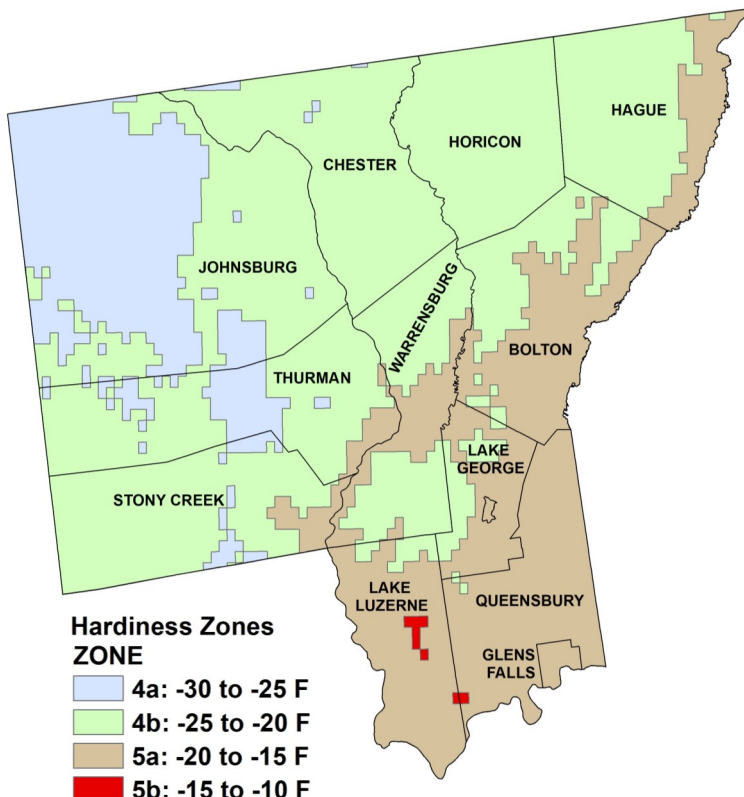
Go Wild with our new Northeast Wildflower Seeds

This year the District is offering a wildflower seed pack with species that are native to our region. Once established, wildflowers are low maintenance, attractive to pollinators, a food source for wildlife and are naturally beautiful. This seed pack offers a variety of native annual and perennial wildflowers that will look great in any backyard!

Species offered in the 2020 seed pack: New England Aster, Bachelor's Button, Lance-Leaved Coreopsis, Purple Coneflower, Lupine, Black-Eyed Susan and annuals for some early season color.



Warren County USDA Hardiness Zones



Notes for 2020

- ALL Trees and Shrubs are BARE ROOT
- Be sure to pre-order Apple & Pear trees !
Call 518-623-3119 to place your pre-order.
- New Species for 2020:
 - ◇ Douglas Fir
 - ◇ Shagbark Hickory
 - ◇ Nannyberry
 - ◇ Witch Hazel
 - ◇ Apples : Liberty & Empire
 - ◇ Pears : Blake's Pride & Moonglow
 - ◇ Northeast Wildflower Seed Mix



Adopt a Hemlock Program: The District continues to offer 10 free Hemlock seedlings to interested landowners, to raise awareness of the Hemlock Woolly Adelgid. Contact our office for more information

2020 TREE & SHRUB SEEDLING ORDER FORM

Order Instructions: Please insert **total number of plants ordered under quantity (QTY)** ↓

TREE TRANSPLANTS	SIZE	10	50	100	500	QTY.	COST
White Cedar (Arborvitae)	10-18"	\$16	\$72	\$135	\$630		
Blue Spruce	12-18"	\$10	\$38	\$70	\$330		
Norway Spruce	15- 24"	\$15	\$65	\$120	\$570		
Douglas Fir (for 2020 only)	10- 18"	\$15	\$65	\$120	\$570		
Canaan Fir	8- 14"	\$15	\$65	\$120	\$570		
White Spruce	15- 20"	\$10	\$38	\$70	\$330		
Fraser Fir	10- 18"	\$15	\$67	\$123	\$590		
TREE SEEDLINGS	SIZE	10	50	100	500	QTY.	COST
Native White Birch	18- 24"	\$15	\$64	\$118	\$565		
Sugar Maple	10-20"	\$16	\$71	\$135	\$630		
Shagbark Hickory	12- 18"	\$15	\$67	\$123	\$590		
SHRUB SEEDLINGS	SIZE	10	50	100	500	QTY.	COST
Arrowwood	18-24"	\$15	\$64	\$120	---		
American Hazelnut	18-24"	\$13	\$58	\$108	---		
Nannyberry	18-24"	\$13	\$57	\$105	---		
Which Hazel	18-24"	\$13	\$57	\$105	---		
Elderberry	24- 36"	\$12	\$54	\$100	---		
Silky Dogwood	10-18"	\$10	\$38	\$70	---		
Ninebark	36-48"	\$12	\$51	\$95	---		
FRUIT TREES & SHRUBS	SIZE	2	SOLD IN PAIRS FOR POLLINATION			QTY.	COST
HB Blueberry - Blue Ray & Jersey	9 - 12"	2/\$10	All fruit orders contain one of each species				
Apple - Liberty & Empire	3- 5'	2/\$35	(Limited quantities-call for avail.) one of each sp				
Pear - Bake's Pride & Moonglow	3- 5'	2/\$35	(Limited quantities-call for avail.) one of each sp				
CONSERVATION PACKS	QUANTITIES-2 plants of each species				QTY.	COST	
Bird & Butterfly Pack	Butterfly Bush, Arrowwood, L. Spicata (blz .star), Ninebark, Button Bush				\$18		
Native Flowering Pack	W.F. Dogwood, Elderberry, Blk. Chokeberry, Eastern Redbud, Nannyberry				\$16		
Nut Tree Pack	Chinquapin Oak, White Oak, Red Oak, Shagbark Hickory, Pin Oak				\$18		
SUPPLEMENTAL MATERIALS	QUANTITIES / DESCRIPTIONS				QTY.	COST	
Agriform™	Fertilizer tablets(20-10-5)		10 per packet		\$2		
Agrosok™: Root watering crystals	2 oz. packet - reduces the need to water				\$2		
Blue Bird Nest Box	Economy	has a predator guard			\$10		
Blue Bird Nest Box	Deluxe	Peterson's Style			\$15		
Bat Nursery Box	holds ~ 30 little brown bats				\$15		
Wood Duck House	~ 18" x 10" x 12"				\$20		
Tree shelter with stake	2 ft.	2' tall shelter (w/ hardwood stake)			\$6		
Tree Mats	3 ft. x 3 ft.	landscape fabric that suppresses weeds			\$2		
WILDFLOWER & GAME SEEDS	QUANTITIES / DESCRIPTIONS				QTY.	COST	
Northeast Wildflower Seed Mix	4oz.	Covers ~1,200 sqft, variety of growing conditions			\$15		
Deer Plot Mix	1 lb.	*20 varieties of perennials			\$15		
Deer Plot Mix	10 lb.	*20 varieties of perennials			\$70		
Small Burnett Mix	1 lb.	*long lived perennial forb.			\$15		
Small Burnett Mix	10 lb.	*long lived perennial forb.			\$65		
Tall Mix - upland game birds	5 lb.	*20 varieties of reseeding annuals			\$15		
Tall Mix - upland game birds	25 lb.	*20 varieties of reseeding annuals			\$50		
Short Mix - upland game birds	5 lb.	*15 varieties of annuals and reseeding annuals			\$15		
Short Mix - upland game birds	25 lb.	*15 varieties of annuals and reseeding annuals			\$50		

Make Checks payable to: WARREN COUNTY SWCD	TOTAL COST
Mail to: 394 Schroon River Rd., Warrensburg, NY 12885	(orders due Friday, March 13th / Pick up Friday, April 24th)
Name: _____	Phone: _____
Address: _____	State: _____ ZIP: _____
Email: _____	Preferred contact (X): <input type="checkbox"/> Email <input type="checkbox"/> Mail <input type="checkbox"/>

***NOTE: The District is not responsible for the success or failure of the plantings. This sale is for conservation purposes only and not for resale.
 ***All species are bare root stock. Specimen size/quality are subject to growing season conditions *** There is a \$40 fee for returned checks

Phone (518) 623-3119 Email: marenalexander@nycap.rr.com Website: www.warrenswcd.org

2020 TREE & SHRUB SEEDLING INFORMATION

SPECIES	MATURE HEIGHT	GROWTH RATE	LIGHT PREF.	SOIL TYPES	PREF. SOIL MOISTURE	COMMON USES/CHARACTERISTICS
CONIFERS						
White Cedar (Arborvitae)	20-30'	→/↓	☀	S,L,C,A	m	good choice for windbreaks or hedges
Blue Spruce	50-60'	→/↓	☀	S,L,C,A	wd	nice blue-green color, valued landscape tree
Norway Spruce	40-60'	→/↑	☀	S,L,C,A	m, wd, pd	ideal windbreak, dark green needles
White Spruce	50-60'	→	☀	S,L,C,A	m	straight, tall, good year-round color
Douglas Fir * (note below)	45-75'	↓	☀/●	S,L,C,A	m	popular Christmas tree, good windbreak
Canaan Fir	50-60'	→/↓	☀/●	S,L,C,A	m	ornamental/ Christmas tree
Fraser Fir	30-60'	→	☀/●	S,L,C,A	m	one of the most popular Christmas trees
DECIDUOUS HARDWOODS						
Native White Birch	40-50'	→/↑	☀/●	S,L,C,A	m, wd	distinct paper-like bark, excellent fall color
Sugar Maple	50-75'	↓	☀/●	S,L,C	wd	great fall color, syrup production
Shagbark Hickory	80'	↓	☀	S,L	wd	beautiful when its winter buds open in late spring
FRUIT TREES/SHRUBS						
Arrowwood	12-15'	↑	☀	S,L,C,A	m, wd	showy in spring when the flowers bloom
American Hazelnut	8-16'	→/↑	☀	S,L	wd	blooms in early to mid spring
Elderberry	5-12'	↑	☀/●	S,L,C,A	m	deep purple fruit, umbel shape
Silky Dogwood	6-8'	↑	☀/●	S,L,C,A	all	white flowering shrub
Ninebark	5-10'	↑	☀/●	S,L,C	wd, md, pd	splitting bark forms layers of strips on the stem
Nannyberry	20'	↑	☀	S,L,C,A	all	glossy green foliage that turns red-purple in fall.
Witch Hazel	20'	→/↓	☀/●	S,L,C,A	all	fragrant flowers, bright yellow ribbons, fall bloom
Highbush Blueberry	15-22"	→	☀	S,L,C,A	wd, md	landscape bush, low maintenance, juicy berries
Liberty Apple	25-30'	→/↑	☀	S,L,C,A	wd, md	firm flesh, crisp, Sweet/tart flavor, available Sept-Dec
Empire Apple	25-30'	→/↑	☀	S,L,C,A	wd, md	juicy, crisp and mildly sweet, high in Vitamin C
Blake's Pride Pear	12-20'	↑	☀	S,L,C,A	wd, md	white flowers, 6-8 hours of sunlight a day
Moonglow Pear	12-20'	↑	☀	S,L,C,A	wd, md	braches will spread to 12 - 20'
CONSERVATION PACKS						
Nut Tree Pack	60-70'	↑	☀/●	S,L,C	wd	great food source for wildlife, firewood
Native Flowering Pack	10-25'	↑	☀/●	S,L,C	wd	produces flowers for pollinators and fruits for wildlife
Bird & Butterfly Pack	10-70'	↑	☀/●	S,L,C	wd	food source for caterpillars and adult butterflies
HABITAT IMPROVEMENT SEED MIXES lbs./acre						
Small Burnett	1.5'	→/↑	25	S,L,C	variety	wildlife food and cover, good for erosion control
Deer Plot Mix	6-8"	→/↑	35	L	variety	20 species of perennials for hooved browsers
Short Mix	2-4'	→/↑	25	S,L,C	variety	variety of annuals & reseeding annuals for upland birds
Tall Mix	up to 10'	→/↑	25	S,L,C	variety	variety of reseeding annuals for upland birds
** A soil test is recommended, lime and fertilize as needed, broadcast seed and cover by raking and mulch if possible.						
SUPPLEMENTAL MATERIALS						
Agrosoke™	add to soil mixture, reduces watering frequency				crystals, retains moisture	
Tree mats	3' square mat with micro pores to let water through				suppresses competition from weeds	
Tree shelters w/ stakes	2' Tube with stake and zip tie				prevents chewing damage to stems	
Agriform™ (fert. tablets)	(20-10-5)	slow release			tree fertilizer tablets	
Northeast Wildflower Seed Mix	4 oz.	covers 1,200 sq. ft.			19 perennial and self sowing annuals	
Bluebird nest box	Economy	with predator guard			pairs should be 20-30 feet apart	
Bluebird nest box	Deluxe	Peterson's Style			paired sets should be 150 feet apart	
** bluebirds will rear a second brood if the nest is removed after the first fledglings have left						
Bat box	small nursery box will hold up to ~ 30 little brown bats					
Wood Duck box	mount 2' above high water mark over water or ~20 ft. in hardwoods					
<u>Soil Types</u>	<u>Soil Moisture</u>		<u>Growth Rate</u>		<u>Light Preference</u>	
S - Sandy	m - moist		↑ Fast		☀ Full Sun	
L - Loamy	wd - well drained		→ Moderate		● Shade	
C - Clay	md - moderately drained		↓ Slow		☀/● Both	
A - Acidic	pd - poorly drained				● Partial	
*NOTE: Douglas Fir is offered in place of Balsam Fir for the 2020 Program						
***** Remember to check box on order form to stay on mailing list *****						

Rooting into Education

Get to know your planting site!

Are you planning to plant a tree, garden, wildflower patch, raingarden or a food plot? Familiarize yourself with the area beforehand and take note of light conditions, soil characteristics, topography and land features.

Know your soil: Do you have sand or clay? Is the ground wet or dry? A soil test will help to understand the quality of your soil, contact your Cornell Cooperative Extension for information. For general information about your soils, visit the [Web Soil Survey](#). Just enter your address, highlight the planting location and it will produce a general reference map of your soils.

Know your plants: What soil do they prefer? What wildlife will it attract? Native specimens will outperform other specimens. They will be healthier and last longer.

Know your frost cycle: To make sure your newly planted garden will survive the seasons, you will need to know your area's average frost dates. In Warren County frost has been seen in mid April and late October, be aware of weather conditions.

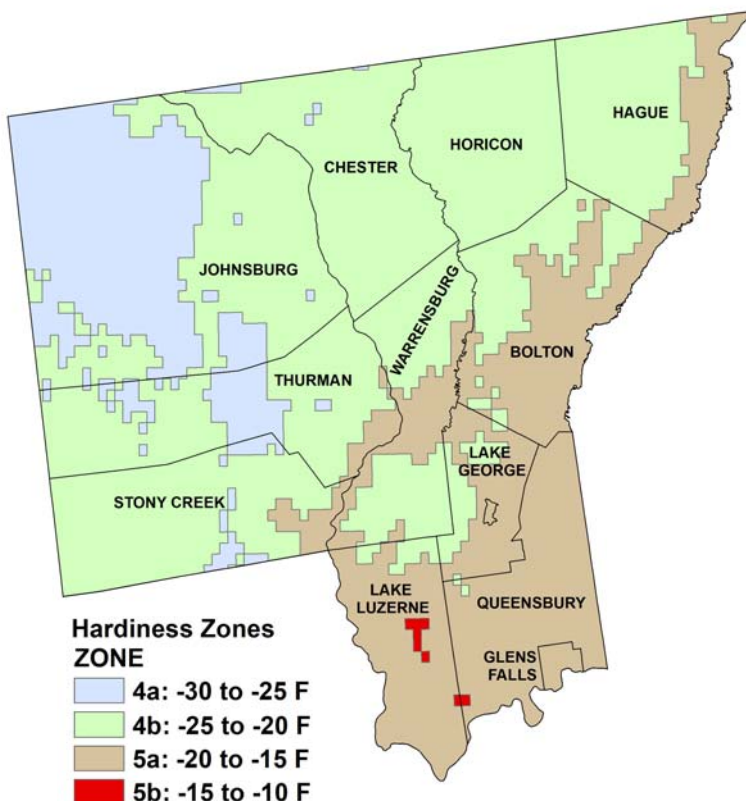
Go Wild with our new Northeast Wildflower Seeds

This year the District is offering a wildflower seed pack with species that are native to our region. Once established, wildflowers are low maintenance, attractive to pollinators, a food source for wildlife and are naturally beautiful. This seed pack offers a variety of native annual and perennial wildflowers that will look great in any backyard!

Species offered in the 2020 seed pack: New England Aster, Bachelor's Button, Lance-Leaved Coreopsis, Purple Coneflower, Lupine, Black-Eyed Susan and annuals for some early season color.



Warren County USDA Hardiness Zones



Notes for 2020

- ALL Trees and Shrubs are BARE ROOT
- Be sure to pre-order Apple & Pear trees !
Call 518-623-3119 to place your pre-order.
- New Species for 2020:
 - ◇ Douglas Fir
 - ◇ Shagbark Hickory
 - ◇ Nannyberry
 - ◇ Witch Hazel
 - ◇ Apples : Liberty & Empire
 - ◇ Pears : Blake's Pride & Moonglow
 - ◇ Northeast Wildflower Seed Mix



Adopt a Hemlock Program: The District continues to offer 10 free Hemlock seedlings to interested landowners, to raise awareness of the Hemlock Woolly Adelgid. Contact our office for more information

2020 TREE & SHRUB SEEDLING ORDER FORM

Order Instructions: Please insert **total number of plants ordered under quantity (QTY)** ↓

TREE TRANSPLANTS	SIZE	10	50	100	500	QTY.	COST
White Cedar (Arborvitae)	10-18"	\$16	\$72	\$135	\$630		
Blue Spruce	12-18"	\$10	\$38	\$70	\$330		
Norway Spruce	15- 24"	\$15	\$65	\$120	\$570		
Douglas Fir (for 2020 only)	10- 18"	\$15	\$65	\$120	\$570		
Canaan Fir	8- 14"	\$15	\$65	\$120	\$570		
White Spruce	15- 20"	\$10	\$38	\$70	\$330		
Fraser Fir	10- 18"	\$15	\$67	\$123	\$590		
TREE SEEDLINGS	SIZE	10	50	100	500	QTY.	COST
Native White Birch	18- 24"	\$15	\$64	\$118	\$565		
Sugar Maple	10-20"	\$16	\$71	\$135	\$630		
Shagbark Hickory	12- 18"	\$15	\$67	\$123	\$590		
SHRUB SEEDLINGS	SIZE	10	50	100	500	QTY.	COST
Arrowwood	18-24"	\$15	\$64	\$120	---		
American Hazelnut	18-24"	\$13	\$58	\$108	---		
Nannyberry	18-24"	\$13	\$57	\$105	---		
Which Hazel	18-24"	\$13	\$57	\$105	---		
Elderberry	24- 36"	\$12	\$54	\$100	---		
Silky Dogwood	10-18"	\$10	\$38	\$70	---		
Ninebark	36-48"	\$12	\$51	\$95	---		
FRUIT TREES & SHRUBS	SIZE	2	SOLD IN PAIRS FOR POLLINATION			QTY.	COST
HB Blueberry - Blue Ray & Jersey	9 - 12"	2/\$10	All fruit orders contain one of each species				
Apple - Liberty & Empire	3- 5'	2/\$35	(Limited quantities-call for avail.) one of each sp				
Pear - Bake's Pride & Moonglow	3- 5'	2/\$35	(Limited quantities-call for avail.) one of each sp				
CONSERVATION PACKS	QUANTITIES-2 plants of each species					QTY.	COST
Bird & Butterfly Pack	Butterfly Bush, Arrowwood, L. Spicata (blz .star), Ninebark, Button Bush				\$18		
Native Flowering Pack	W.F. Dogwood, Elderberry, Blk. Chokeberry, Eastern Redbud, Nannyberry				\$16		
Nut Tree Pack	Chinquapin Oak, White Oak, Red Oak, Shagbark Hickory, Pin Oak				\$18		
SUPPLEMENTAL MATERIALS	QUANTITIES / DESCRIPTIONS					QTY.	COST
Agriform™	Fertilizer tablets(20-10-5)			10 per packet	\$2		
Agrosok™: Root watering crystals	2 oz. packet - reduces the need to water				\$2		
Blue Bird Nest Box	Economy	has a predator guard			\$10		
Blue Bird Nest Box	Deluxe	Peterson's Style			\$15		
Bat Nursery Box	holds ~ 30 little brown bats				\$15		
Wood Duck House	~ 18" x 10" x 12"				\$20		
Tree shelter with stake	2 ft.	2' tall shelter (w/ hardwood stake)			\$6		
Tree Mats	3 ft. x 3 ft.	landscape fabric that suppresses weeds			\$2		
WILDFLOWER & GAME SEEDS	QUANTITIES / DESCRIPTIONS					QTY.	COST
Northeast Wildflower Seed Mix	4oz.	Covers ~1,200 sqft, variety of growing conditions			\$15		
Deer Plot Mix	1 lb.	*20 varieties of perennials			\$15		
Deer Plot Mix	10 lb.	*20 varieties of perennials			\$70		
Small Burnett Mix	1 lb.	*long lived perennial forb.			\$15		
Small Burnett Mix	10 lb.	*long lived perennial forb.			\$65		
Tall Mix - upland game birds	5 lb.	*20 varieties of reseeding annuals			\$15		
Tall Mix - upland game birds	25 lb.	*20 varieties of reseeding annuals			\$50		
Short Mix - upland game birds	5 lb.	*15 varieties of annuals and reseeding annuals			\$15		
Short Mix - upland game birds	25 lb.	*15 varieties of annuals and reseeding annuals			\$50		

Make Checks payable to: WARREN COUNTY SWCD	TOTAL COST <input style="width: 50px;" type="text"/>
Mail to: 394 Schroon River Rd., Warrensburg, NY 12885	(orders due Friday, March 13th / Pick up Friday, April 24th)
Name: <input style="width: 80%;" type="text"/>	Phone: <input style="width: 150px;" type="text"/>
Address: <input style="width: 550px;" type="text"/>	State: <input style="width: 50px;" type="text"/> ZIP: <input style="width: 100px;" type="text"/>
Email: <input style="width: 300px;" type="text"/>	Preferred contact (X): <input style="width: 50px;" type="checkbox"/> Email <input style="width: 50px;" type="checkbox"/> Mail <input style="width: 50px;" type="checkbox"/>

***NOTE: The District is not responsible for the success or failure of the plantings. This sale is for conservation purposes only and not for resale.
 ***All species are bare root stock. Specimen size/quality are subject to growing season conditions *** There is a \$40 fee for returned checks

Phone (518) 623-3119 Email: marenalexander@nycap.rr.com Website: www.warrenswcd.org