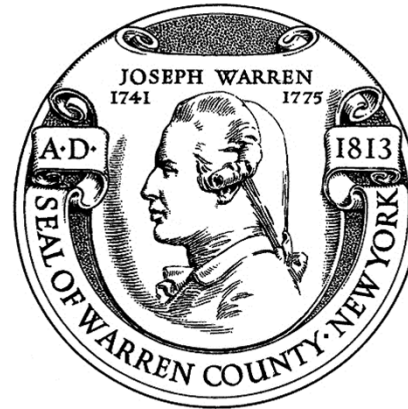


Collaborating



LAKEGEORGEAREA
IN NEW YORK'S ADIRONDACKS
VisitLakeGeorge.com

BOS Economic Growth Committee
March 25th, 2018

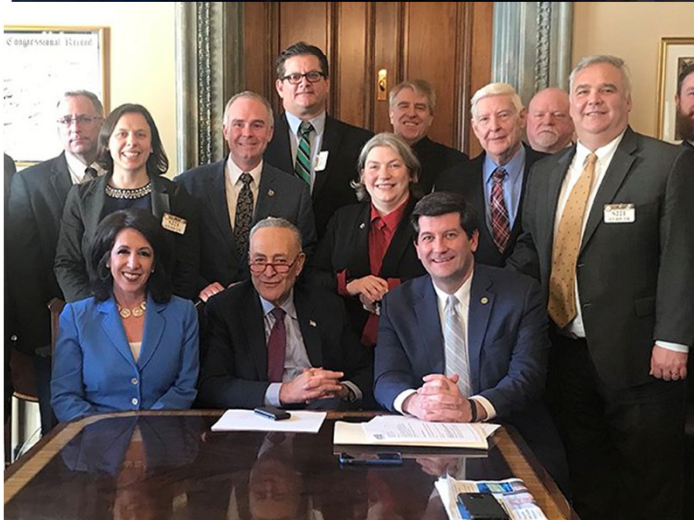
EDC Assists Lt. Gov Hochul Visit to Warren County on March 19th



EDC North Country Affordable Housing Roundtable – Crandall Library March 6th



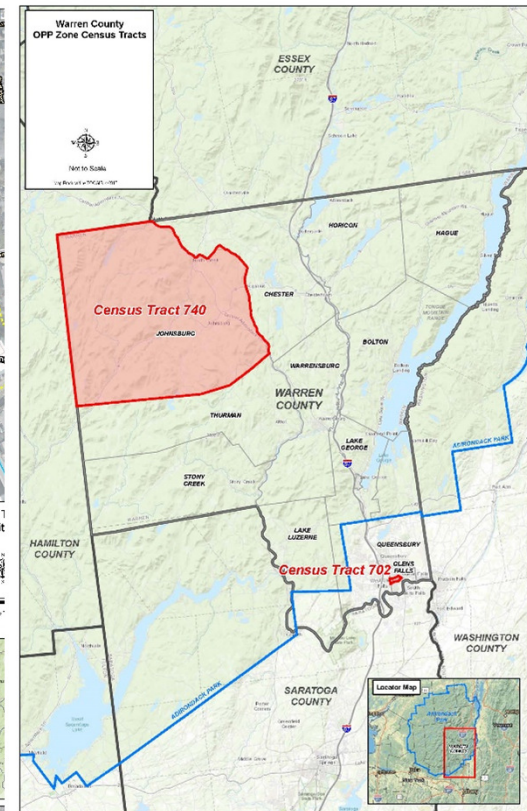
EDC Joins Contingent from Warren and Saratoga Counties in D.C. March 5th



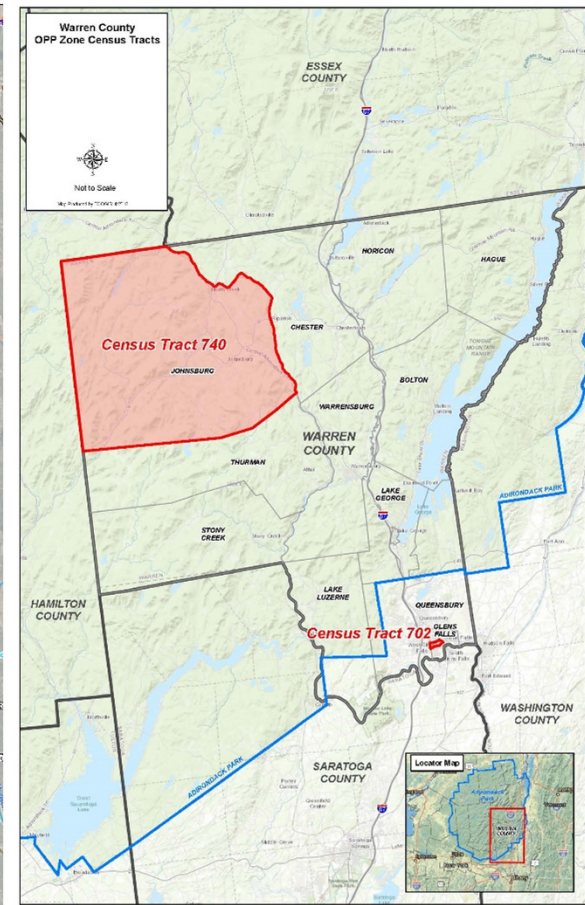
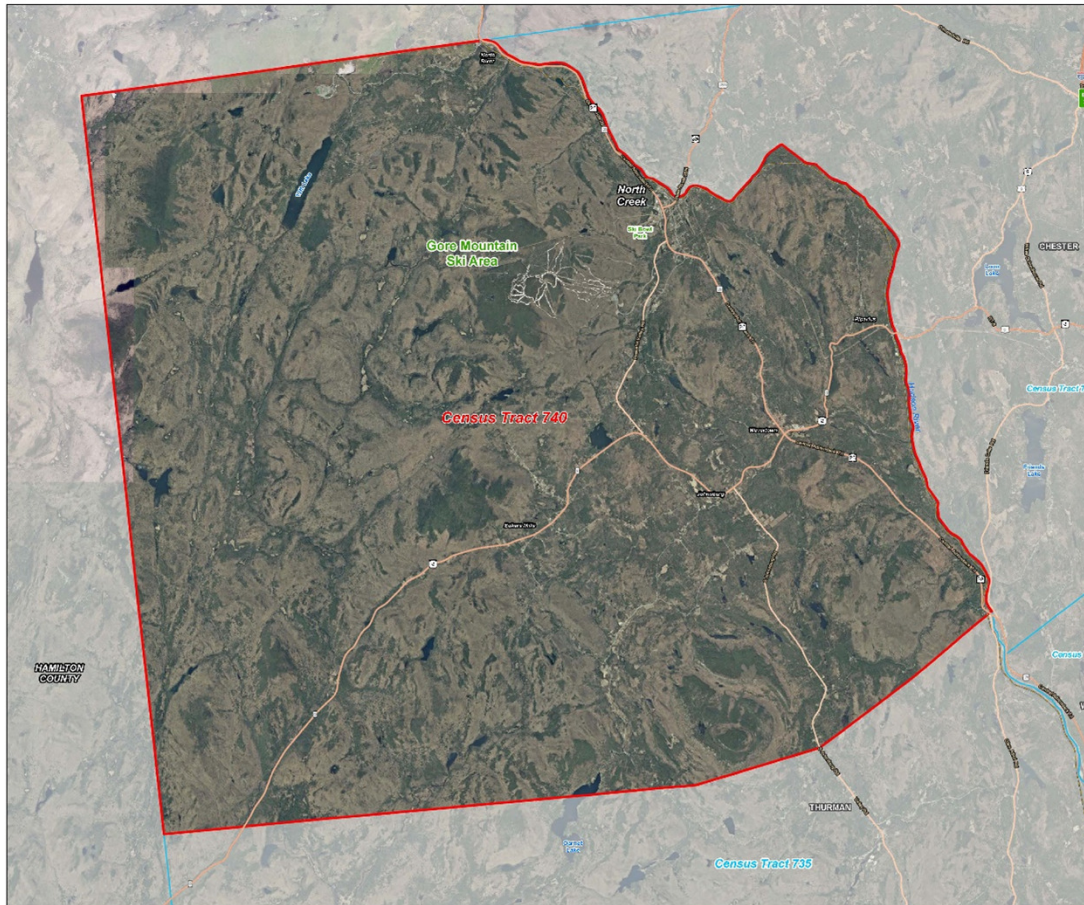
EDC Seeks Potential Northern Border Regional Commission Federal Assistance



Approved Federal Opportunity Zone Census Tract 702 – City of Glens Falls



Approved Federal Opp. Zone Tract 704 – Johnsburg North Creek/Gore Mtn area



Regional Marketing of Opportunity Zones – Capital Region

NY'S CAPITAL REGION OPPORTUNITY ZONES

20 Opportunity Zones in 8 counties



DEMOGRAPHICS

60,000+
residents

26,274
employed residents
in 2017

4.7% ↑
increase in
employed residents
over last 5 years

8.2%
combined
unemployment
rate in 2017,
down from 13.2
percent 5 years
earlier

16,100+
residents below
the poverty level

28.4%
combined
poverty rate

Regional Marketing of Opportunity Zones – Capital Region

1	JOHNSBURG/NORTH CREEK Census Tract 740, Warren County	11	HUDSON Census Tract 12, Columbia County
2	GLENS FALLS Census Tract 702, Warren County	12	HUDSON Census Tract 132, Columbia County
3	FORT EDWARD Census Tract 880, Washington County	13	CATSKILL Census Tract 810, Greene County
4	CORINTH Census Tract 640, Saratoga County	14	ALBANY Census Tract 2, Albany County
5	SCHENECTADY Census Tract 202, Schenectady County	15	ALBANY Census Tract 11, Albany County
6	SCHENECTADY Census Tract 210.01, Schenectady County	16	RENSSELAER Census Tract 515, Rensselaer County
7	SCHENECTADY Census Tract 335, Schenectady County	17	ALBANY Census Tract 21, Albany County
8	TROY Census Tract 404, Rensselaer County	18	ALBANY Census Tract 23, Albany County
9	TROY Census Tract 407, Rensselaer County	19	ALBANY Census Tract 25, Albany County
10	TROY Census Tract 408, Rensselaer County	20	ALBANY Census Tract 26, Albany County

Commuting Trends – Capital Region

Greater Capital Region Commuting Trends, 2010-2016



23.3 minutes

Average Capital Region Commute

1 in 10 workers

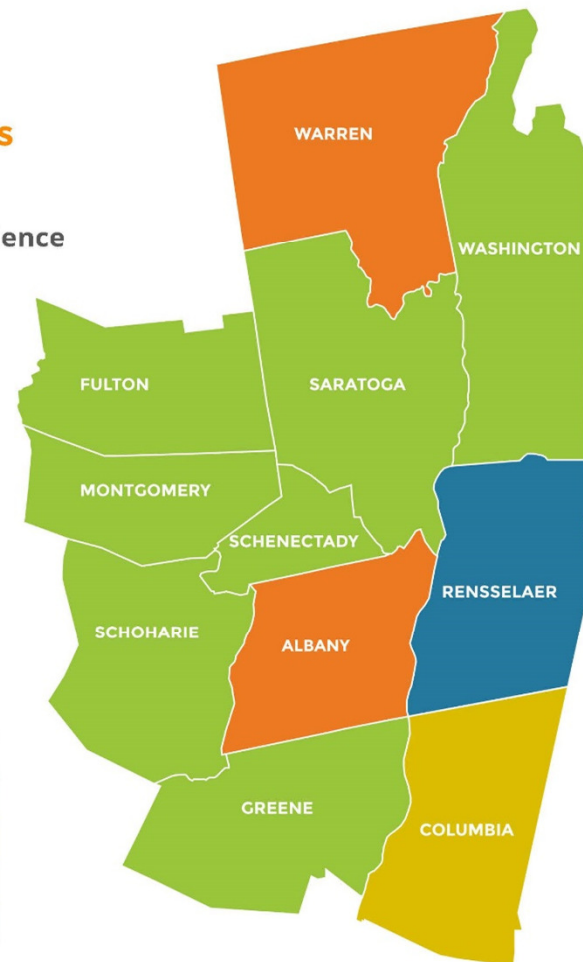
travel 45 mins or more to work

More than 1 in 3 workers

have commutes outside their counties of residence

COUNTY	% of People Working Outside County of Residence
ALBANY	20%
COLUMBIA	33%
GREENE	42%
RENSSELAER	53%
SARATOGA	44%
SCHENECTADY	47%
WARREN	28%
WASHINGTON	47%
FULTON	41%
MONTGOMERY	45%
SCHOHARIE	42%

KEY
20% - 29%
30% - 39%
40% - 49%
50%+



Notes: Source: US Census Bureau, ACS (S0801). Five-year estimates.

Commuting Trends Data Chart

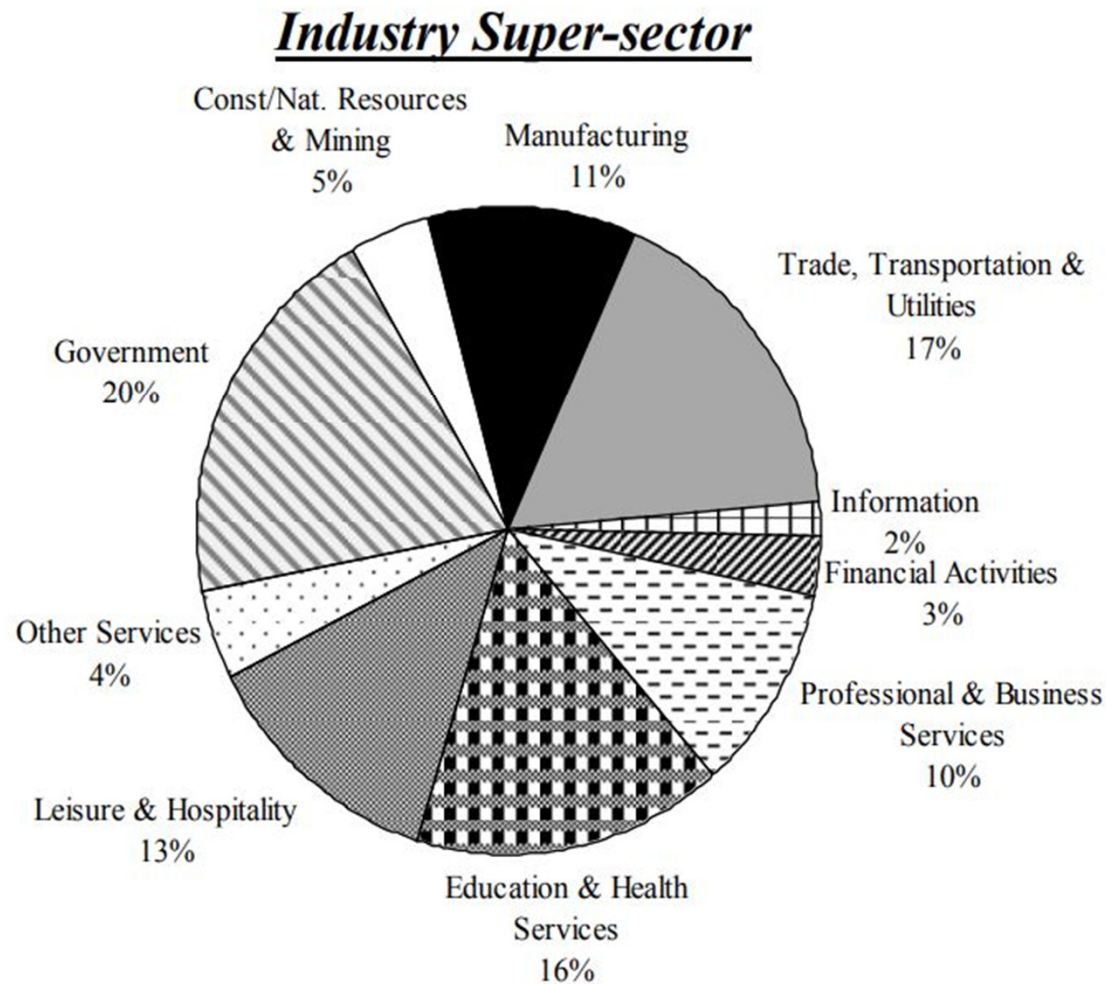
Capital Region

Greater Capital Region Commuting Trends, 2010-2016								
Region/Counties	Worked outside county of residence				Worked outside state of residence			
	2016		2010-2016 # Change		2016		2010-2016 # Change	
	#	Share of Total	#	Share of Total	#	Share of Total	#	Share of Total
Albany-Schenectady-Troy MSA	161,773	37.4%	3.8%	0.9%	5,391	1.2%	9.3%	0.1%
Capital Region	195,553	37.1%	2.7%	0.5%	10,122	1.9%	3.7%	0.0%
Albany County	30,365	19.8%	16.3%	2.4%	1,066	0.7%	-2.1%	0.0%
Columbia County	9,571	32.5%	-2.0%	0.3%	1,909	6.5%	-5.1%	-0.2%
Greene County	8,042	41.8%	-7.3%	-1.1%	139	0.7%	-38.5%	-0.4%
Rensselaer County	41,801	53.2%	3.7%	1.8%	2,835	3.6%	10.7%	0.3%
Saratoga County	49,936	43.7%	-1.1%	-2.1%	974	0.9%	8.5%	0.0%
Schenectady County	33,898	46.9%	2.5%	0.6%	338	0.5%	35.2%	0.1%
Warren County	8,673	27.6%	6.5%	1.4%	312	1.0%	-8.5%	-0.1%
Washington County	13,267	47.1%	-3.7%	-2.2%	2,549	9.0%	6.8%	0.5%
NY Outlier Counties	24,975	42.8%	2.8%	2.5%	428	0.7%	24.1%	0.2%
Fulton County	9,767	41.3%	13.1%	4.7%	169	0.7%	131.5%	0.4%
Montgomery County	9,435	44.6%	-3.5%	0.1%	81	0.4%	-42.1%	-0.3%
Schoharie County	5,773	42.5%	-1.7%	2.6%	178	1.3%	34.8%	0.4%
Non-NY Outlier Counties	2,570	3.2%	2.7%	0.1%	5,320	6.7%	4.7%	0.4%
Berkshire County	1,825	2.9%	6.2%	0.2%	3,253	5.2%	11.7%	0.5%
Bennington County	745	4.3%	-5.1%	0.0%	2,067	11.9%	-4.7%	0.1%

Source: US Census Bureau, ACS (S0801). Five-year estimates.

NYS DOL Monthly Jobs Report

NONAGRICULTURAL EMPLOYMENT BY SUPER-SECTOR GLENS FALLS MSA, FEBRUARY 2019



EDC Marketing & Attraction Focus: Existing Properties Inventory



EDC Marketing & Attraction Focus: Existing Properties Inventory

**Merrill Magee House, Restaurant & Inn –
Hudson & Main Street, Warrensburg, NY**



EDC Goals For 2019

- Pathway Corridor – Seek Funding for Preferred Option
- Grow Private Sector Participation in EDC by 15%
- Develop Opportunity Zone Strategic Marketing Plan & Regional Collaboration
- Broadband/Cell Coverage Advocacy & Project Participation
- Advocate For Additional Funding for LG Wastewater Facility
- 7-10 Projects for CFA Round 9 - \$5 to \$10 Million Awards
- Assist Affordable Housing Studies for ADK Hamlets
- Obtain Minimum 1 New Occupant for Tech Meadows; Goal of 2
- Participate in WDB; Participate in a Regional Workforce Approach
- DRI - Initiate Demo /Site Prep for Market; Launch Art District; New Parking Structure
- QBP - Begin Additional Required Site Preparation; Comprehensive Development Plan and Revised/Updated Marketing

EDC Congratulates 2019 NYS Mr. Basketball & Family



EDC Congratulates 2019 Class B NYS Basketball Champs – Glens Falls



EDC Congratulates 2019 Class C Section II Champs Lake George and Record 54 Game Win Streak



March Madness Coming 2019-2020 to Warren County is an Economic Boost

