

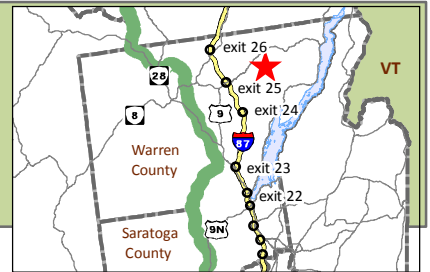


# First Wilderness Heritage Corridor

## Hiking Trails

# Lily Pond and Round Pond via Grassville Rd

LAKE GEORGE WILD FOREST - TOWN OF HORICON, NY



- Difficulty:** Easy
- Length:** 5.2 miles round trip
- Markers:** unmarked to Lily Pond, yellow to Round Pond
- Time to Complete:** 2.5 - 3 hours
- Trailhead Coordinates:** -73 40.80 43 41.67
- Trail Notes:** This is a nice walk to two pretty ponds, with several primitive campsites dotting their shores. Round Pond is stocked with rainbow trout. The trails, especially the Round Pond trail, can be quite wet, so these are good trails to explore during a dry stretch. If hiking during wet weather, be prepared for mud. The Lily Pond campsites are accessed via the Lily Pond trail, which turns off east of the pond and can be followed back to NY 8.

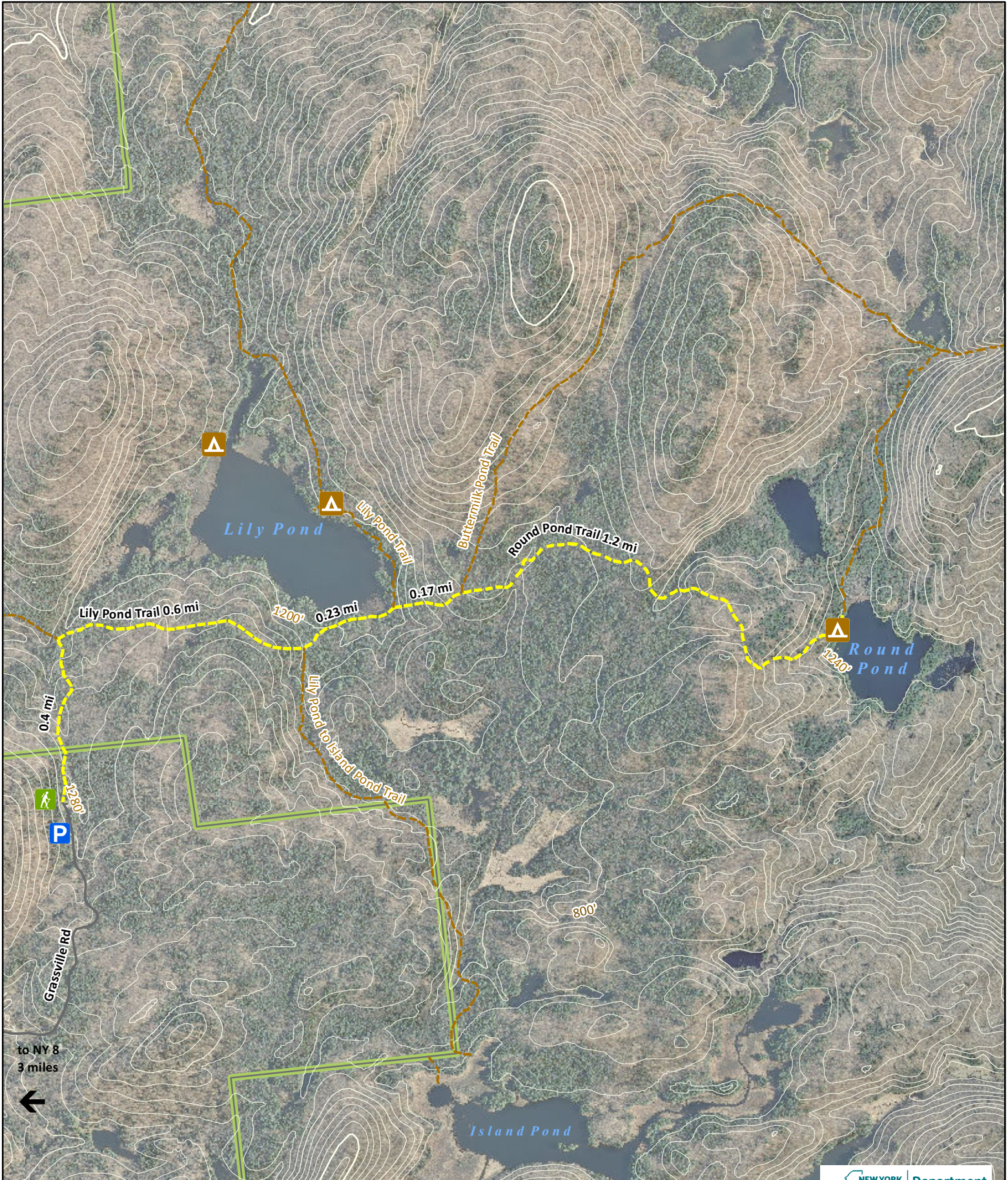


### Directions and Parking:

Take the Northway to Exit 25. Turn east onto NY-8 N and continue for approximately 3.8 miles. Turn right onto Grassville Rd and continue approximately 3 miles to the end. There is a red camp at the end of the road. The trail begins next to the camp and continues for a short distance on private land before the state land begins; please be respectful of the landowner.

### Things to Do Nearby:

The Lily and Round Pond trails hook up with additional trails for a longer hike. Several primitive campsites provide the option for an overnight stay and all of the ponds have good fishing. The nearby hamlet of Brant Lake offers dining, swimming, a canoe and kayak launch, and road and mountain biking opportunities.



1 inch = 1,500 feet

0 250 500 Meters

0 500 1,000 2,000 3,000 Feet

State land

Trailhead

Parking

Primitive Campsite

Lily Pond/Round Pond Trails

other trails

20' Contours

Roads



map prepared by Warren County GIS  
 July 2018 for NY DOS with funds provided  
 under Title 11 of the Environmental  
 Protection Fund.