

- ZONE ONE**
- REINFORCED TURF GRASS FOR MIXED USE;
 - AUXILIARY SHORT TERM, LOW FREQUENCY PARKING (75 VEHICLES)
 - TEMPORARY STAGE AND AUDIENCE AREA
 - TENT SPACE FOR CRAFT FAIRS, ETC.
 - PLAY FIELD

- ZONE TWO**
- POROUS ASPHALT AREA FOR MIXED USE:
 - LONG TERM, HIGH FREQUENCY PARKING (90 SPACES)
 - LARGE VEHICLE ACCESSIBILITY
 - MOTORCYCLE DEMONSTRATIONS
 - MOTORCYCLE PARKING
 - ANTIQUE CAR DISPLAY

- ZONE THREE**
- REINFORCED TURF WITH IN-GROUND MARKERS FOR MIXED USE:
 - SHORT TERM, MEDIUM FREQUENCY AUXILIARY PARKING (52 SPACES)
 - FARMER'S MARKET
 - FLEA MARKET
 - CRAFT FAIRS

Lands Now or Formerly of Fort William Henry Corp. Book 497 Page 222 Section 264.06 Block 2 Lot 51

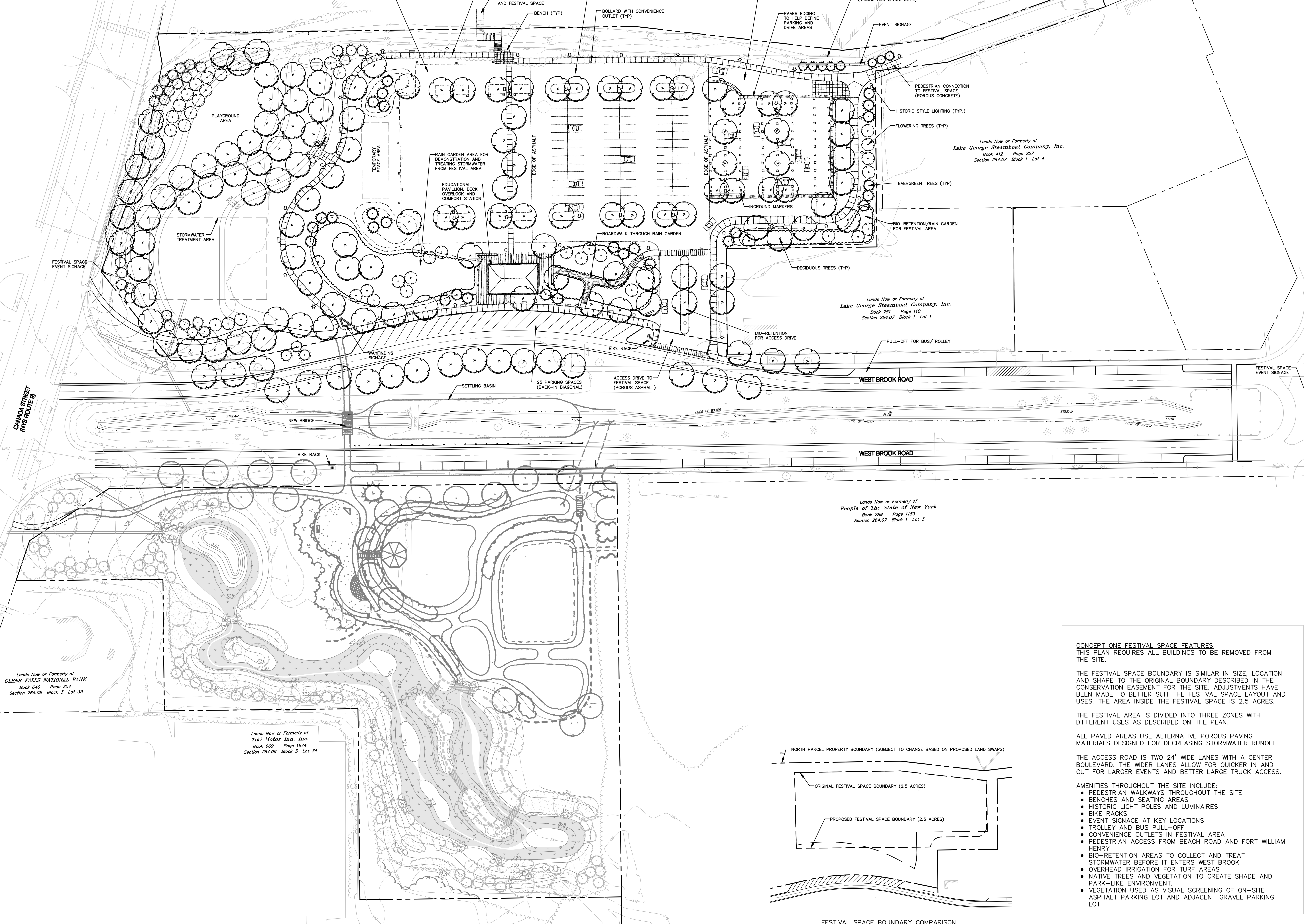
Lands Now or Formerly of Lake George Steamboat Company, Inc. Book 412 Page 227 Section 264.07 Block 1 Lot 4

Lands Now or Formerly of Lake George Steamboat Company, Inc. Book 751 Page 110 Section 264.07 Block 1 Lot 1

Lands Now or Formerly of People of the State of New York Book 269 Page 1189 Section 264.07 Block 1 Lot 3

Lands Now or Formerly of GLENS FALLS NATIONAL BANK Book 640 Page 254 Section 264.06 Block 3 Lot 33

Lands Now or Formerly of Tiki Motor Inn, Inc. Book 669 Page 1674 Section 264.06 Block 3 Lot 34



CONCEPT ONE FESTIVAL SPACE FEATURES
 THIS PLAN REQUIRES ALL BUILDINGS TO BE REMOVED FROM THE SITE.

THE FESTIVAL SPACE BOUNDARY IS SIMILAR IN SIZE, LOCATION AND SHAPE TO THE ORIGINAL BOUNDARY DESCRIBED IN THE CONSERVATION EASEMENT FOR THE SITE. ADJUSTMENTS HAVE BEEN MADE TO BETTER SUIT THE FESTIVAL SPACE LAYOUT AND USES. THE AREA INSIDE THE FESTIVAL SPACE IS 2.5 ACRES.

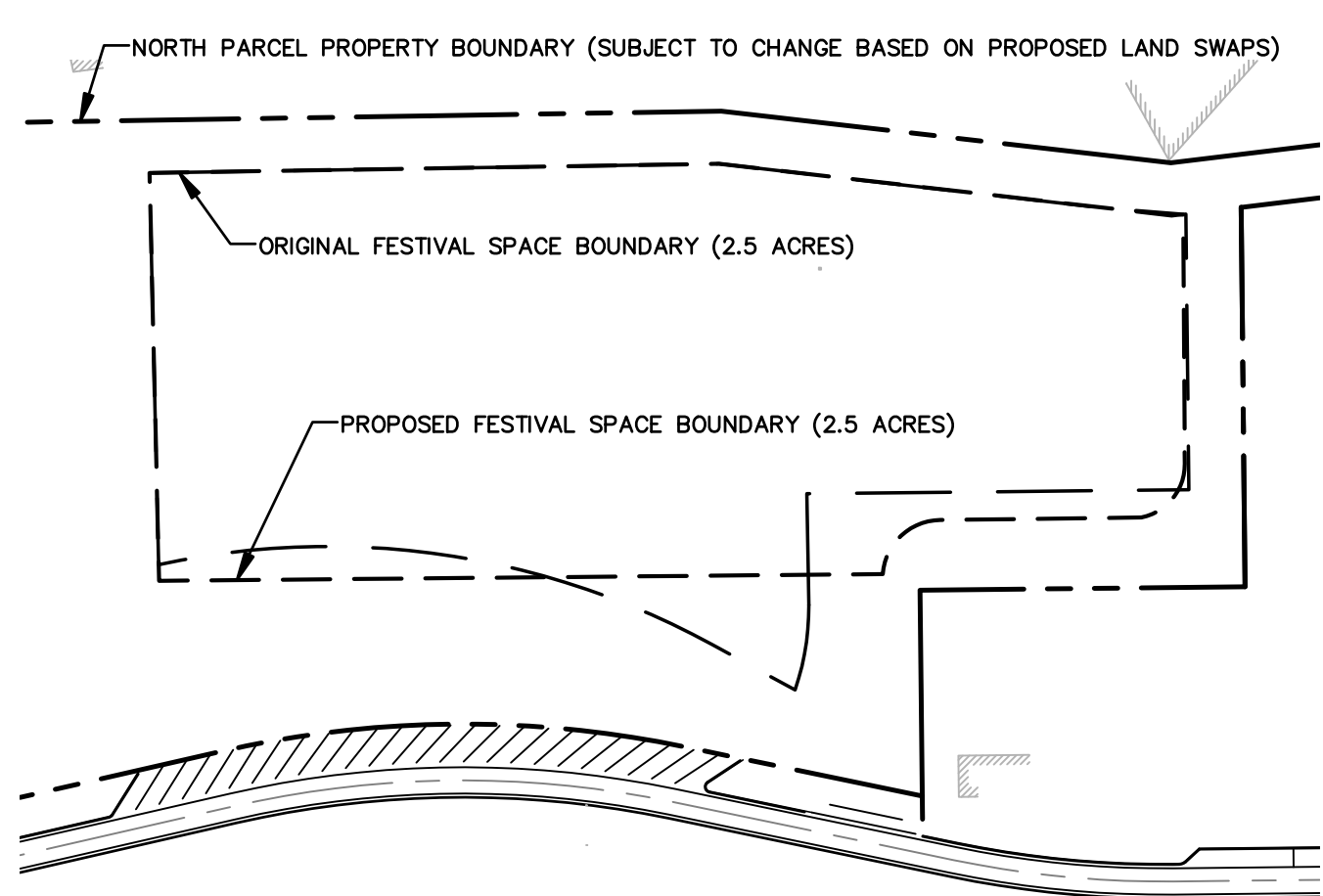
THE FESTIVAL AREA IS DIVIDED INTO THREE ZONES WITH DIFFERENT USES AS DESCRIBED ON THE PLAN.

ALL PAVED AREAS USE ALTERNATIVE POROUS PAVING MATERIALS DESIGNED FOR DECREASING STORMWATER RUNOFF.

THE ACCESS ROAD IS TWO 24' WIDE LANES WITH A CENTER BOULEVARD. THE WIDER LANES ALLOW FOR QUICKER IN AND OUT FOR LARGER EVENTS AND BETTER LARGE TRUCK ACCESS.

AMENITIES THROUGHOUT THE SITE INCLUDE:

- PEDESTRIAN WALKWAYS THROUGHOUT THE SITE
- BENCHES AND SEATING AREAS
- HISTORIC LIGHT POLES AND LUMINAIRES
- BIKE RACKS
- EVENT SIGNAGE AT KEY LOCATIONS
- TROLLEY AND BUS PULL-OFF
- CONVENIENCE OUTLETS IN FESTIVAL AREA
- PEDESTRIAN ACCESS FROM BEACH ROAD AND FORT WILLIAM HENRY
- BIO-RETENTION AREAS TO COLLECT AND TREAT STORMWATER BEFORE IT ENTERS WEST BROOK
- OVERHEAD IRRIGATION FOR TURF AREAS
- NATIVE TREES AND VEGETATION TO CREATE SHADE AND PARK-LIKE ENVIRONMENT.
- VEGETATION USED AS VISUAL SCREENING OF ON-SITE ASPHALT PARKING LOT AND ADJACENT GRAVEL PARKING LOT



WEST BROOK CONSERVATION INITIATIVE FESTIVAL AREA CONCEPT ONE