

BECAUSE
EVERYTHING IS
SOMEWHERE!



PROGRAM NEWSLETTER

Inside this issue:

GIS Day 1

User's Group 1

Aerial Photos 2

Puzzler 2

Website 3

NYS GIS
Association 3

Municipal
Corner 3

GIS in Action 4

What is GIS? 4

Volume 1, Issue 1

DECEMBER 2008

GIS DAY CELEBRATED!



cheese stuffed bagels!), distribution of the GIS Day Geography Quiz, and a short video on GIS.

Several dozen visitors swung by the Planning Department to check out the "Visualizing Our World

On Wednesday, Nov 19th, the County celebrated the 10th Annual GIS Day. Each year, this occasion takes place during the middle of Geography Week in mid-November with participation world-wide.

This year's event kicked off with breakfast (cream



Through Maps" gallery and partake in snacks.

In the afternoon, treats from around the world were offered—Italian biscotti, apples (NYS!), salsa and chips, Scottish shortbread & Chinese fortune cookies. These were



accompanied, of course, by a map of these places and quick fact blurbs.

There were 15 quiz contestants.

Top Winners:

1. Ana Hlakik
2. Maureen Worthing
3. Amy Manney
4. Dave Kenyon
5. Bill Mahar
6. Lisa Taylor

Special thanks to Pat Tatich, Planning Dept. Director for her collaboration designing the hallway gallery and the tasty treats provided!

LOWER ADIRONDACK GIS USERS GROUP

The Lower Adirondack GIS Users Group (LAGIS) would like to welcome our new co-coordinator, Heather Baker (GIS Specialist, Washington County).

Warren and Washington Counties alternated hosting the LAGIS meetings, which has diversified where the attendees travel from. Also new this year was a focus on "theme" meetings, giving a tremendous boost in attendance and participation! Topics included real

property, planning, and grants.

If you would like to be notified about upcoming meetings, please sign up via the Warren County website at (under **Outreach**) or contact Sheri Norton at nortons@co.warren.ny.us.

Membership is free and open to anyone with an interest in learning more about the technology and hopefully sharing their own experiences.

NYS AERIAL PHOTO PROGRAM UPDATE

“A map is the greatest of all epic poems. Its lines and colors show the realization of great dreams.”

Gilbert H. Grosvenor, Editor of National Geographic (1903- 1954)

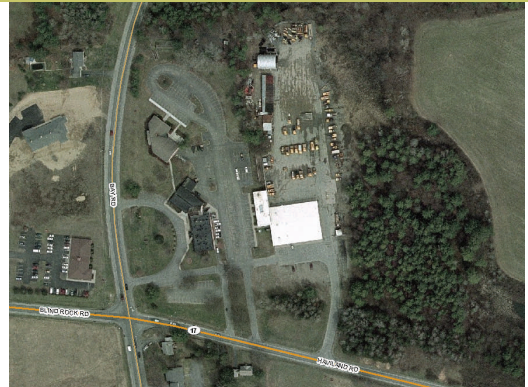


The NYS Cyber Security and Critical Infrastructure Coordination (CSCIC) has managed the aerial photography program since 2000, providing digital imagery every 4-5 years of Warren County. Currently there are two sets of imagery: 2001 and 2004.

This past April, CSCIC contracted with Sanborn to capture photography in the Adirondacks, including Warren County. Unlike the 2004 batch, rural areas (approximately 90% of the County) will now be **natural color** imagery instead of black and white.

Some of the towns (Bolton, Hague, Horicon, Lake George, Queensbury, and Warrensburg) split the cost with Warren County to upgrade the resolution (quality) of selected populated regions. The Town of Queensbury opted to upgrade all rural areas from 2-foot to 1-foot resolution, and the City of Glens Falls upgraded entirely from 1-foot to 0.5-foot resolution!

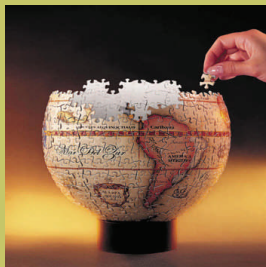
Unfortunately, due to poor weather conditions in the spring (early leaf-out in



some areas with heavy snow cover in others) CSCIC will be re-flying the non-upgraded rural areas in April 2009 (see the map below for the region covered).

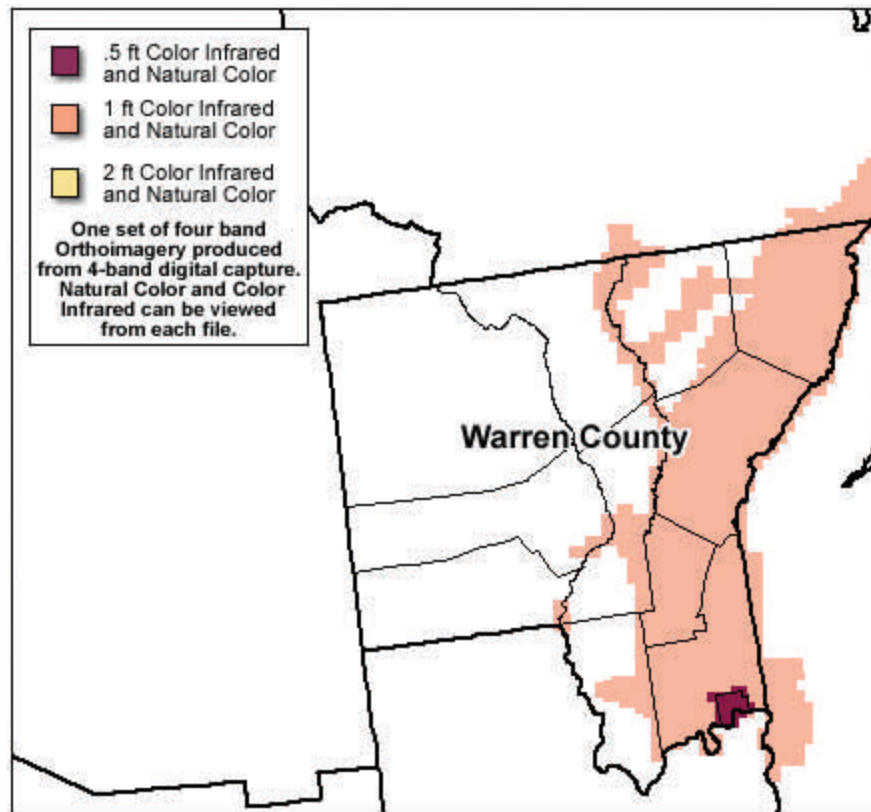
On a positive note, however, all upgraded areas were successfully photographed and the images are now being processed and quality checked. These images will be available to the County in the spring of 2009 (and then distributed to the municipalities and posted on the Spatial Data Viewer).

PUZZLER



What caused Oregon’s Crater Lake to form?

Created after the collapse of Mount Mazama, an ancient volcano.

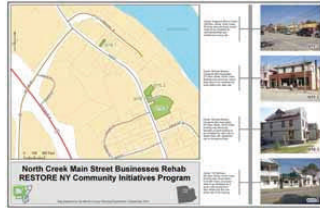


GIS WEBSITE

The Warren County GIS website was overhauled last year. All pages in the site now have a standard "look and feel" and have been streamlined to load quicker. Eventually these pages will also be handicap-accessible as well.

New features include project highlights (such as the Act for Youth Community Mapping and outreach program to a Warrensburg Kindergarten class),

E-911 Coordination portal (with wonderful assistance from Jake Hume in IT), additions to the Town Atlas Series, and enhanced Data Download and request forms.



I was invited to a Kindergarten class at Warrensburg Elementary School, located in Warren County in upstate New York, to help the students learn about maps and diversity of cultures and

NYS GIS ASSOCIATION

The NYS GIS Association (NYSGISA) was formally incorporated in April 2006 as a not-for-profit professional organization in the State of New York.

The NYSGISA mission is to assist, educate, coordinate and guide the implementation, development and maintenance of GIS (Geographic Information Systems) technology in New York State.

Anyone interested in GIS is welcome to join the Association. For more information check out the NYSGISA website at



<http://www.nysgis.org/> or contact Sheri Norton (Secretary of the Board) at 761-6410.

For those that are already members, consider joining one of the many committees (Business Development, Legislative, Marketing, Education, Regional Coordination, Conference, Membership) to help improve GIS in our state.

Special thanks to Peter Girard in the Tourism Department for developing the new GIS Program logo!

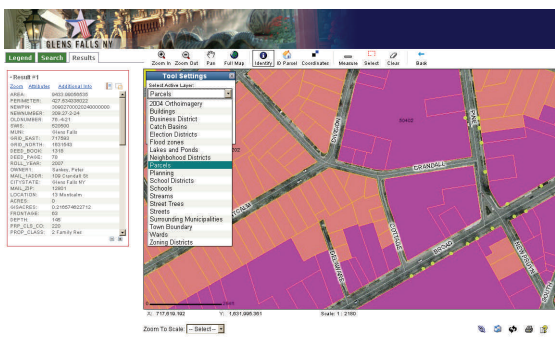
MUNICIPAL CORNER

The **City of Glens Falls** Interactive Mapping Website went live earlier this year. This grant-funded program in partnership with the Town of Queensbury is open to the public, providing property information and many other data layers (zoning, tree inventory, aerial photography, etc.).

<http://gis.queensbury.net/GlensFalls/>

In addition to this resource, the City Assessor's Office now has desktop ArcView 9.3, and the staff has definitely appreciated the new PDF tax

maps to reprint sections for the public (rather than dragging the entire hardcopy map collection over to the Xerox machine!).



The City Engineer, Steve Gurler, is spearheading preparation for a GIS Needs Assessment to be completed in-house next year. The City would like to use GIS to help improve coordination of activities between departments.

WARREN COUNTY PLANNING AND COMMUNITY DEVELOPMENT DEPARTMENT

1340 State Route 9
Lake George, NY 12845

Phone: 518-761-6410
Fax: 518-761-6411

E-mail: nortons@co.warren.ny.us

www.co.warren.ny.us/gis

SERVICES

- Technical Assistance and Training
- Custom Maps
- Data Development
- Geographic Analysis
- GPS
- E-911 Coordination

RESOURCES



NYS GIS
Association

NYS GIS
Clearinghouse

Cornell University
Geospatial
Repository (CUGIR)

NYS GIS Help Desk

US Census Bureau
American Factfinder

GIS IN ACTION

It's been a busy year for the County GIS Program! In early spring the GIS Administrator, in coordination with Laura Moore and Wayne LaMothe of the Planning Department, reviewed and corrected all streets as well as address locations countywide in preparation for the 2010 Census.



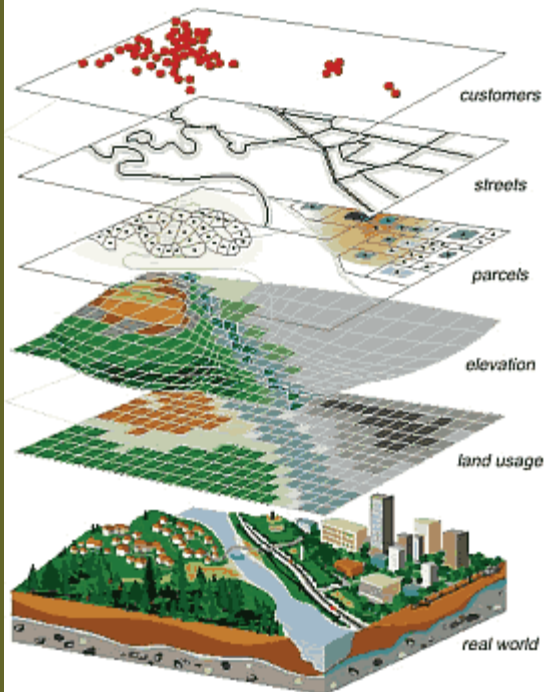
The Warren County tax maps were printed for the first time from GIS. With a few hurdles (an outdated custom map program!) and extensive testing, the final PDF maps were produced by Senior Tax Map Technician Ron Dixon late spring. These maps are now available for download by municipality via the Warren County GIS website.

Technical assistance was provided in partnership with the Town of Queensbury GIS Administrator, George Hilton, to assist the Glens Falls Tree Committee updating City's inventory of trees. This project, coordinated by Glens Falls High School teacher Jason Bretchko, is a continuation of a survey conducted by Mr. Bretchko's students several years ago. Information about species, diameter and height, and basic health were examined by students in the fall. This data will eventually be posted on the City's GIS website.

A countywide GIS Needs Assessment project is planned for next year, updating the 2001 project. In the past seven years there have been many changes in departments, computers and networking, as well as GIS capabilities in the county.

The goals for this endeavor are to examine what previously defined applications are still relevant, determine new tasks that could benefit from GIS, and creation of a countywide plan for making the technology and its potential end products (hardcopy and digital maps, analysis, charts, etc.) accessible to all staff that needs it.

WHAT IS GIS?!



Source: <http://gislounge.com/what-is-gis/>

GIS operates on many levels. On the most basic level, GIS is used as computer cartography, i.e. mapping. The **real power** in GIS is through using spatial and statistical methods to analyze attribute and geographic information. The end result of the analysis can be derivative information, interpolated information or prioritized information.

Source: <http://gislounge.com/what-is-gis/>

